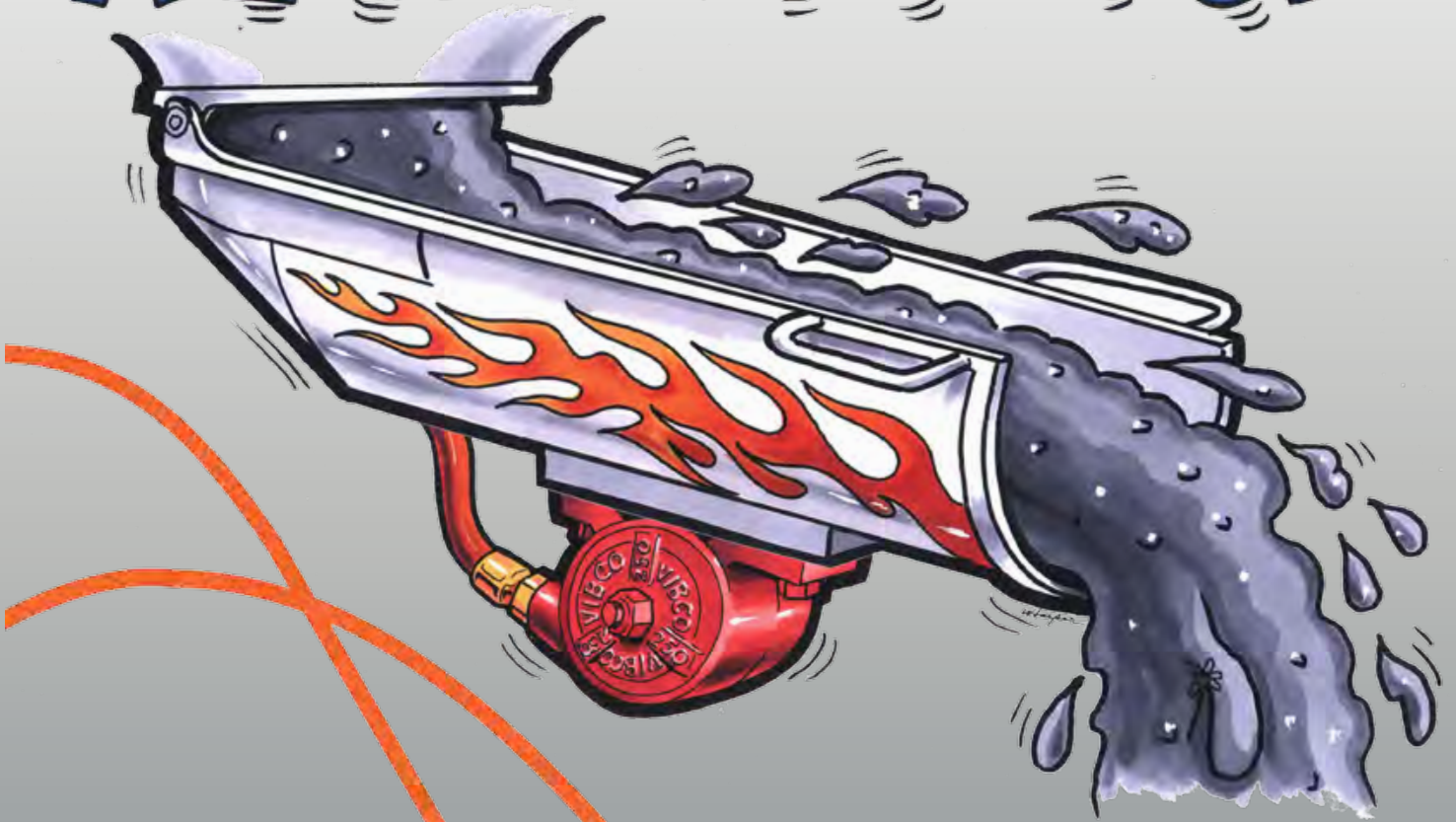


THE CHUTE VIBRATOR



**Pour Fast,
Clean, Safe
and Smart.**

We're The **CONCRETE** Vibrator Guys!

VIBCO

VIBCO Chute Vibrators keep Ready Mix profits flowing in the right direction.

- **Move low slump and pervious concrete easily.**
- **Pour at low angles on any terrain without raking.**
- **Get on the road faster with more efficient charge hopper loading.**
- **Save labor costs by reducing clean up time.**
- **Load more pours and pour more loads per day.**



VIBCO's Chute Vibrator Kits are the easiest, most affordable way for you to stay profitable and consistent in today's competitive and regulated market where customers require faster, safer, more efficient pours.

What are you doing to keep up with customer demands and regulations while maintaining profitability?

VIBCO Has the Right Chute Vibrator for Your Discharge Chute or Charge Hopper.

Pneumatic Turbine Vibrator Complete Kit CHV-25

- SILENT Operation
- Low air consumption - runs off your truck's auxiliary air
- No lubrication required
- Most popular option that outlasts pistons 3 to 1

12 Volt Vibrator Complete Kit CHV-6

- SILENT Operation
- Light-weight, corrosion-resistant plastic housing
- Low amperage draw (3 amps at max speed) powered right off truck's fuse panel or battery
- Totally enclosed for easy washdown

Pneumatic Piston Vibrator Complete Kit CHV-501

- Moderate air consumption
- Lubrication required
- Use when noise is not a concern
- Replaces competitive piston vibrators

VIBCO's Complete Mounting and Power Kits Include Everything You Ne

Pneumatic Turbine Vibrator Model CHV-25

Kit includes steel mounting channel iron*, bolts & washers, pneumatic rocker switch, hose & hose fittings



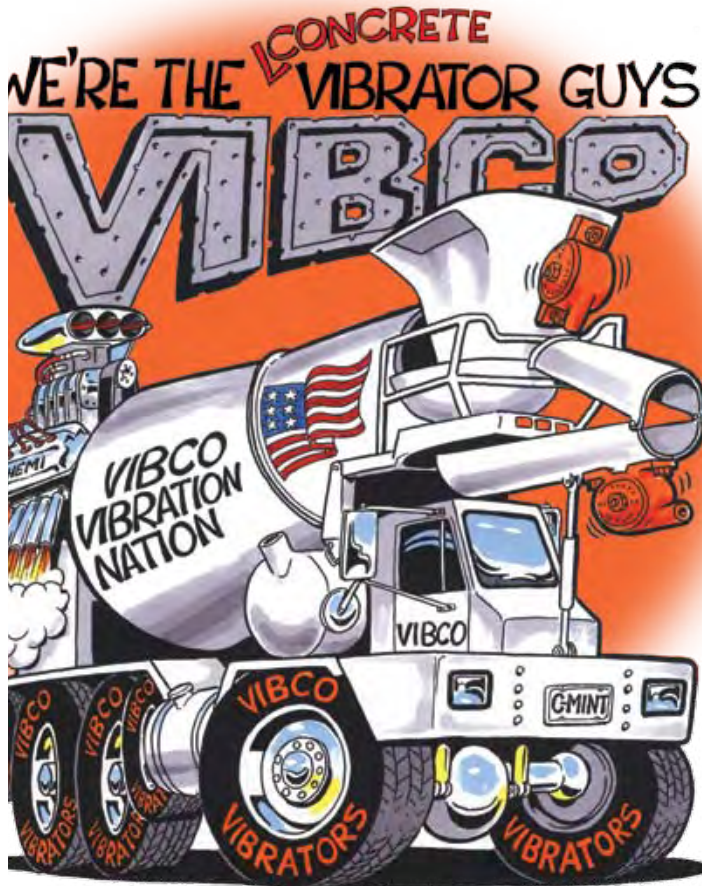
12 Volt Vibrator Model CHV-6

Kit includes steel mounting channel iron*, off switch, 16 gauge wire, butt splice conn



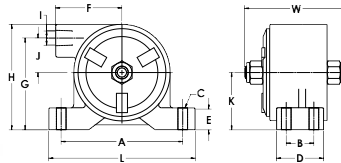


Designed for use on either front or rear discharge trucks.



Technical Data

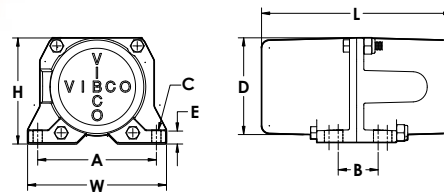
Model	CFM	VPM	Weight
CHV-25	9	5500	5 lbs



A		C**		D		E		F		G		I*
Inch	mm	Inch	mm	Inch	mm	Inch	mm	Inch	mm	Inch	mm	Air Inlet
4	102	1/2	13	1 1/2	38	9/16	14	2 1/4	57	3	76	1/4-NPT
J		K		L		W		H				
Inch	mm	Inch	mm	Inch	mm	Inch	mm	Inch	mm			
1 1/8	29	1 7/8	48	5 1/2	140	3 5/8	92	3 11/16	94			

* NPT Pipe Tap Size ** Bolt Size

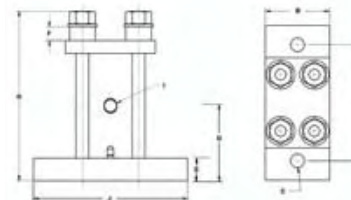
Model	Force	Amps	Volts	VPM	dB	Weight	Duty
CHV-6	60 lbs	3	12 & 24	3600	68	4.25 lbs	Cont.



A		B		C*		D		E	
Inch	mm	Inch	mm	Inch	mm	Inch	mm	Inch	mm
3 5/8	92	1 5/16	33	1/4	6	3	76	3/8	10
L		W		H					
Inch	mm	Inch	mm	Inch	mm				
6 3/8	162	4 1/2	114	3 1/4	83				

* Bolt Size

Model	CFM	VPM	Weight
CHV-501	7	5500	9 lbs



A		B		C**		E					
Inch	mm	Inch	mm	Inch	mm	Inch	mm				
4-1/2	114	2-1/2	64	1/2	13	7/8	22				
F		G		H		I		J			
Inch	mm	Inch	mm	Inch	mm	Inch	mm	Air Inlet	Inch	mm	
17/32	6	6	152	6-1/2	165	1/4-NPT	6	152			

**Bolt size

Pneumatic Piston Vibrator Model CHV-501

bolts & washers, on/ectors, terminal ends
Kit includes steel mounting channel iron*, bolts & washers, pneumatic rocker switch, hose & hose fittings, lubricator



*Steel mounting channel iron is 30" standard length. Can be cut to custom length.

